



**EUROPEAN HERITAGE
OPEN DAYS PART ONE
ANTRIM AND ARMAGH**



An Roinn
Pobal

Department for
Commonities

EUROPEAN HERITAGE OPEN DAYS 2024

**LINKS TO HERITAGE CONNECTIONS
ROUTES AND NETWORKS**



/loveheritageni



@loveheritageni

Saturday 14 & Sunday 15 September



EUROPEAN HERITAGE OPEN DAYS 2024

Free Entry to over **250 Properties** and events
14-15 September

European Heritage Open Days (EHOD) is Northern Ireland's annual celebration of local architecture, history and culture. This year the European wide theme of **“Routes, Networks and Connections – Links to our heritage”** is about discovering links and connections in our heritage which help us discover the links and connections we have as people. It is a chance for everyone to explore the wonderful shared cultural heritage right on our doorstep through the stories of our buildings and monuments as well as the beautiful natural environment which surrounds us and within local villages towns and cities.

This year EHOD will take place with access to heritage buildings on the weekend of 14-15 September. Over 250 heritage buildings and events are opening during this weekend **FREE OF CHARGE**. A number of these properties are not normally open to the public, so this really is a fantastic opportunity to explore, engage and imagine the legacy of our historical past.

Not all of the event and property details will be listed in this brochure so I would encourage you to keep an eye on the webapp, website and facebook page for up to date listings and any instances of changes or cancellation:

<https://bit.ly/EHOD2024>, www.discovernorthernireland.com/ehod and facebook.com/LoveHeritageNI

It is thanks to a wide and varied range of individuals, communities, volunteers and organisations that makes it possible for us all to delve into our heritage. Northern Ireland has been participating in the annual European Heritage Days for 27 years, and its ongoing success is attributed to the dedication of communities and individuals who contribute to a primarily volunteer-driven program.

I would therefore like to take this opportunity to thank the many volunteers and organisers who allow access to these wonderful buildings and those who provide events including hosted talk and exploration walks. Without their enthusiasm and generosity this annual heritage festival would not be possible.

Paul Price
Director Historic Environment Division
Department for Communities

EHOD COMPETITIONS

Have you been inspired by European Heritage Open Days festival?- Share your experience and you could win some very special prizes!

HERITAGE EXPOSED PHOTO COMPETITION

Be inspired and take the time to capture the spirit of your visits and enter your best photo in our “**Heritage Captured**” competition for EHOD 2024.

Digital images can be submitted via email to ehod@communities-ni.gov.uk or upload in the comments section of the relevant post on our social media channels.

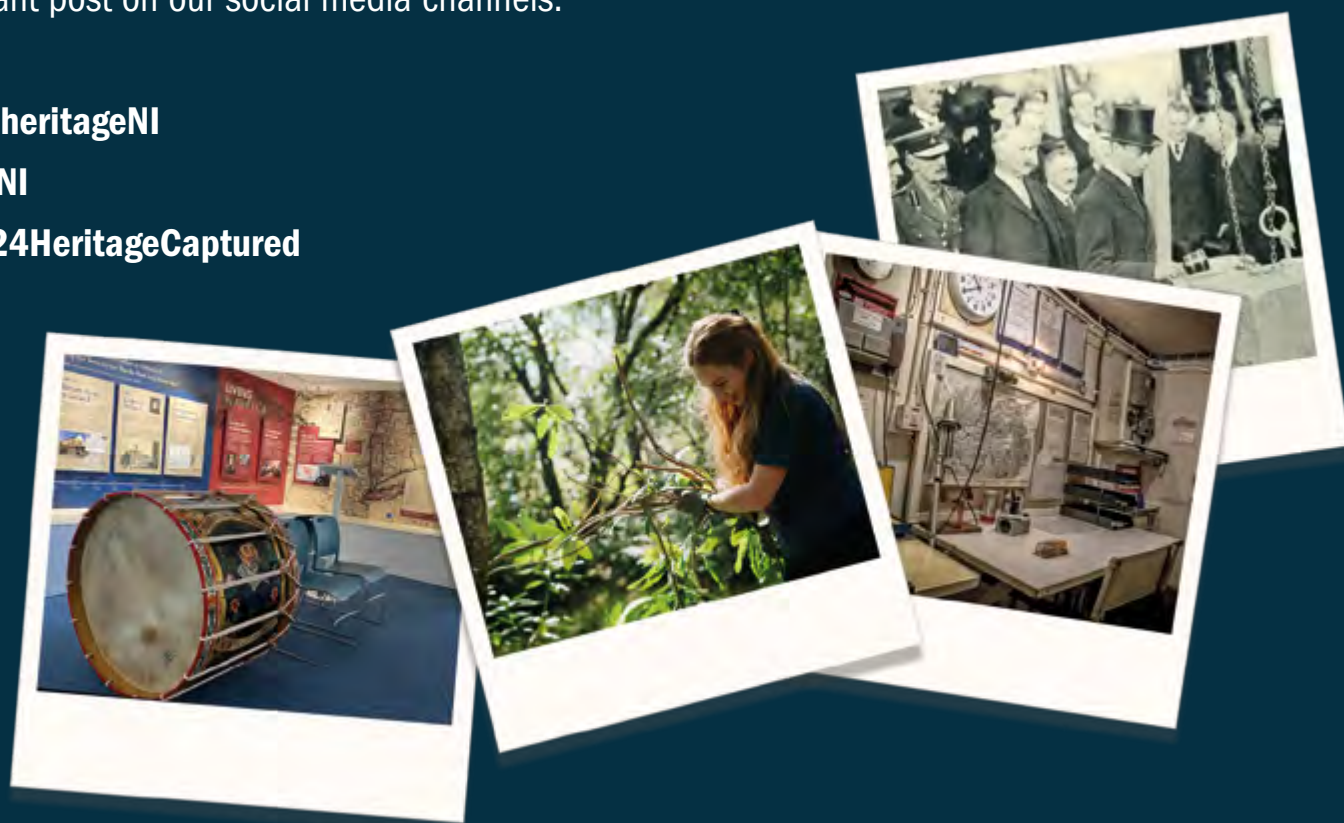
Facebook: www.facebook.com/loveheritageNI

Instagram: [Instagram/loveheritageNI](https://www.instagram.com/loveheritageNI)

Please use the hashtag: #EHOD2024HeritageCaptured



Scan the QR using your phone to access more details.



Open to all ages, the winner will receive a special prize.

Entries will be published on our social media channels and may be used in future EHOD promotions.

We would also like to create a digital display and showcase entries at an exhibition for EHOD 2025.

Children's Art Competition

If you are aged between 5 and 18 send us your original artwork inspired by your favourite building or monument or heritage event. It could be one you visit during EHOD weekend or one near where you live or would like to visit at a future EHOD weekend.

Prizes will be awarded in the following categories:

Ages 5-7, 8-12, 12-18 and Special needs 18 and under.

Submit your entries digitally via email to

ehod@communities-ni.gov.uk or upload in the comments section of the relevant post on our social media channels:

Facebook: www.facebook.com/loveheritageNI

Instagram: [Instagram/loveheritageNI](https://www.instagram.com/loveheritageNI)

Please use the hashtag: **#EHOD2024KidsArt**

If submitting hard copy artwork please send to:

**EHOD Team, HED, DfC, Level 4 Causeway Exchange,
1-7 Bedford Street Belfast BT2 7EG**

Entries will be published on our social media channels and may be used in future EHOD promotions. We will also exhibit entries during EHOD 2025.



Scan the QR using your phone to access more details.





SOCIAL MEDIA REEL/ VIDEO COMPETITION FOR TEDDY'S DAY OUT

This special competition is open to all ages. Why not bring along your special cuddly friend with you to visit your favourite historic building or monument that captures your imagination and make a social media reel of your teddy enjoying their visit!

Upload your reel to your Facebook or Instagram and tag **@loveHeritageNI** and please use hashtag **#EHOD2024TeddysDayOut**.

Special prize will be awarded to the best reel.

Please read the terms and conditions for these competitions on our website <https://www.communities-ni.gov.uk/articles/european-heritage-open-days>

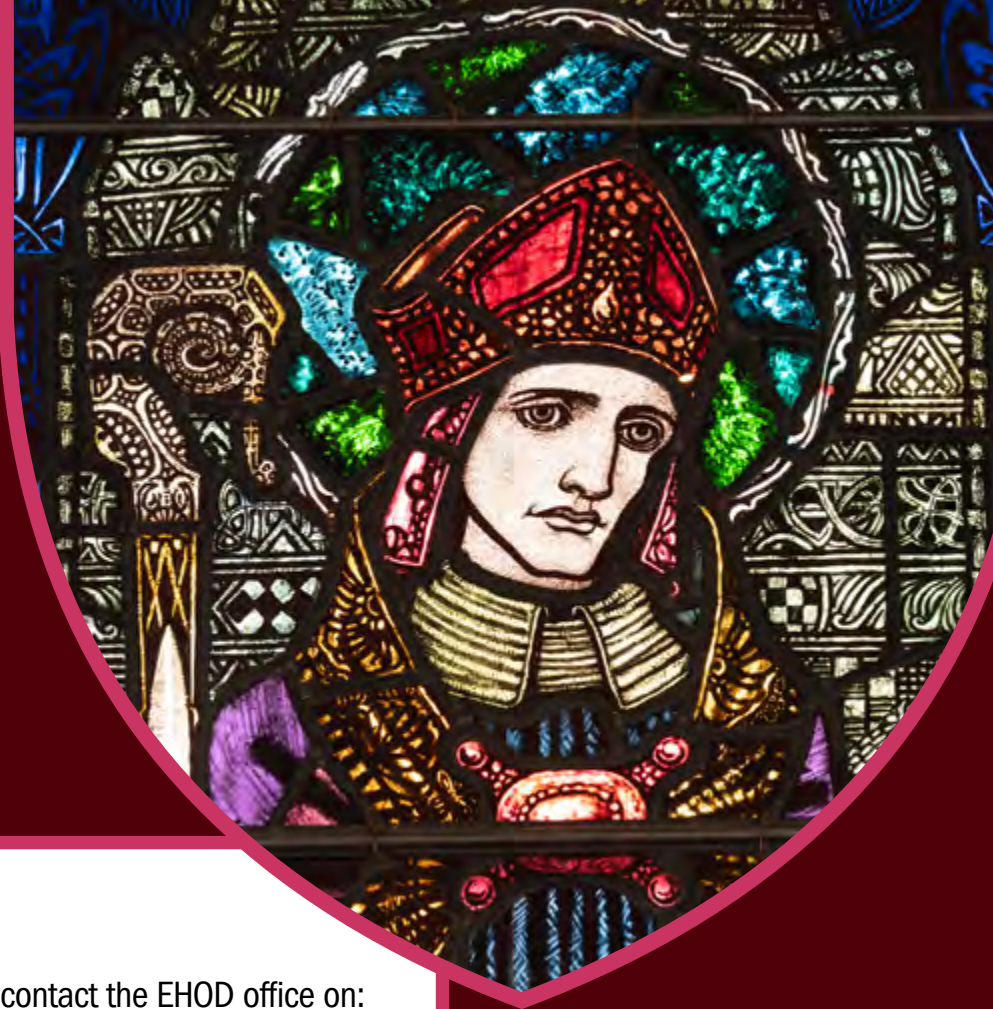
The closing date for all competitions is **30 September**

For further information email: ehod@communities-ni.gov.uk



Pre-Booking

A number of properties have limited places. So you will need to pre-book your place, otherwise access will be denied. Properties which need to be pre-booked are clearly indicated. Please book as early as possible to avoid disappointment. Bookings through <https://ehod.eventcube.io/events> will not open until Monday 5 August and will cease on Thursday 12 September 2024.



Disabled Access

If you intend to visit a particular property and have a disability, please contact the EHOD office on:

028 9082 3207 or email ehod@communities-ni.gov.uk

We cannot guarantee that access and facilities will be suitable for you at participating properties but we will endeavour to find out what measures are in place.

Alterations & Cancellations

Inevitably there will be some alterations and cancellations after print and these will be posted on:

www.discovernortherireland.com/ehod and the Facebook page: www.facebook.com/ehodni

Please check before you travel to avoid disappointment.



ROUTES, NETWORKS AND CONNECTIONS

LINKS TO OUR HERITAGE

This year we have chosen to adopt the common European theme “Routes, Networks and connections” as the subtheme for EHOD2024.

At the heart of this theme are the notions that our heritage, in both its tangible and intangible forms, is a reminder of how peoples, communities, countries and cultures have long been inter-connected, and how we continue to be connected, through common values, shared practices and a desire to protect and make sense of our individual and collective histories. As well as the physical routes that once connected us, so much of our heritage illustrates the mobilities of the past and how people, objects, ideas and beliefs travelled far and wide.

Society is built on networks that have allowed for exchanges in trade, religious beliefs, scientific knowledge, technological innovations, and shared cultural and artistic practices.

Visitors to EHOD will be given access to some of the most remarkable and iconic places where you can explore and discover links and connections about our heritage that help us discover the links and connections we have as people.

While there are too many to highlight, here are just a small sample across the region:

DONAGHMORE HERITAGE CENTRE “OUR EMIGRANT CONNECTIONS” will focus on some of the emigrants who left Donaghmore and district in previous centuries. **See page 245**

CATHEDRALS, CHURCHES AND COTTAGES, A CLOGHER VALLEY TOUR



Join us to uncover beautiful cathedrals, country churches full of art and history and a quaint cottage resonating with stories of Carleton and emigration from Aughadarragh, Augher on this one-off tour of the beautiful Clogher Valley. **See page 259**

TALK AT CARNLOUGH HERITAGE HUB



Frances Anne Vane Tempest Marchioness of Londonderry; Routes, Connections and Networks. **See page 52**

NAVAN CENTRE & FORT

The legendary Navan Fort (Emain Macha) is the earliest capital of Ulster and ancient seat of kings. Explore the archaeology and history associated with the great temple of 95BC, as well as learning of some of the amazing discoveries at the nearby sites of Loughnashade, Haughey's Fort and the King's Stables. **See page 73**

ARMAGH CITY CENTRE WALKING TOUR CELEBRATING EUROPEAN HERITAGE OPEN DAY

Celebrating European Heritage Open Day, this tour of Armagh highlights its roots in myths, legends, history and heritage. **See page 85**

TOUR OF THE TRANSPORT AND INDUSTRY STORES

We're opening the doors to NI's Transport and Industry Store as part of European Heritage Open Days. Our Transport and Industry store is a treasure trove of thousands of automotive, aeronautic and industrial collections that highlight our history of invention in this part of the world. **See page 120**

THE DISCOVERY TOUR AT TITANIC BELFAST

On this award-winning Discovery Tour you'll hear why and how RMS Titanic was built and what happened in its final hours, while learning about the hidden symbolism in Titanic Belfast's iconic building. You might think you've heard it all but until you've been on The Discovery Tour, you don't know the half of it. **See page 121**

NEILL'S HILL RAILWAY STATION

The platform at the former Neill's Hill Railway Station is the only major piece of BCDR infrastructure that remains within the Belfast metropolitan area. **See page 129**

DOWN COUNTY MUSEUM AND DOWNPATRICK AND COUNTY DOWN RAILWAY SOCIETY

Down County Museum are connecting with Down County and Downpatrick Railway to highlight our collections related to evacuees and the Second World War. Get involved with activities at each site, and in between. **See page 187 and 188**

CAMPBILL COMMUNITY GLENCRAIG

Celebrating its 70th Anniversary this year and as part of our Celebrations we are pleased to be involved in the EHOD. For more information on the Glenraig Community. **See page 160**

THE FAMINE SOUP KITCHEN EXPERIENCE AT FRIELS

This authentic experience allows visitors to immerse themselves in 1840's rural village life. **See page 230**

CELEBRATION

PORTAFERRY HERITAGE FESTIVAL

Friday 13 – Sunday 15 September 2024

Three days jam-packed with activities and events celebrating the abundant built, cultural and natural heritage of Portaferry.

Spread your wings and join us on Windmill Hill where Professor Alastair Ruffle will be using live video to present a ‘Bird’s eye view of the formation of Strangford Lough’, showing how the ice ages created this Area of Outstanding Natural Beauty.

‘Drones, Stones and Ancient Bones’ with archaeologists Liam McQuillan and Lisa White is a presentation exploring the 5000 year old megalithic tomb at Millin Bay, just outside Portaferry. By using modern scientific research techniques we can get new clues about this puzzling monument, where these ancestors came from, how they died and even what they may have looked like! You can visit the cairn afterwards, where the archaeologists will be on site.

Theatrical recreations of ‘The McCooney’s’ will be screened at Portico, celebrating the cultural heritage of Portaferry’s famed Joseph Tomelty. His granddaughter Hannah will be in conversation afterwards to discuss his legacy and local historian Allison Murphy will lead a walk and talk special tour of remembrance, from where Joseph lived to where he now rests.

Maritime heritage abounds with boat tours on offer plus free rowing sessions available for anyone over the age of 12 to have a go at rowing in the locally-made skiffs. The RNLI station will be open and exhibitions across the town will tell the tales of ‘Shipwrecks & Saviours on the Lough’ and ‘The Men that made Portaferry’. Or take a trip on the oldest recorded ferry route in Ireland, crossing the Narrows for over 400 years.

Slimy or crispy? Find out everything there is to know about the historic and futuristic uses of seaweed at Queen’s Marine Laboratory or have a go at finding it and eating it with ‘Foraging’ sessions along the shore. Or visit Exploris and enjoy the new ‘Under The Sea’ experience.

Local arts collective 'The Loft Artists' will be displaying their paintings, prints and weavings of the natural landscape at Portico Arts and Heritage Centre, a beautiful piece of heritage in its own right with grade A listed architecture, fascinating local heritage displays and artefacts as well as a restored organ designed for everyone to 'have a go' on.

There's musical heritage, too. 'Sean Donnelly' is known as the 'real folk voice of Northern Ireland' and he'll be telling stories through song on Friday. 'Spring Break' will be rocking up to deliver 1980s musical heritage on Saturday evening and Sunday afternoon sees a stomping celebration of Irish traditional music with 'The Killkennys'.

Lots of Portaferry's heritage buildings will be open including the 16th century Castle and 17th century Templecranny. On Saturday and Sunday from 10:00 -14:00 the 'Artisan Market' will be open in the restored Square, with demonstrations of heritage crafts like soda bread making and weaving as well as an enticing array of local produce to whet your appetite.

The Upper Ards Historical Society is providing a guided walking tour to find out more about the town's heritage buildings and the social history of Portaferry and there's something for the little ones with their very own Heritage Treasure Hunt.

With over 25 great events to enjoy, lots of activities to have a go at and the warmest of welcomes awaiting you, come to the tip of the Ards peninsula to explore our buildings, our boats, our beats and our banter – you'll be amazed at this wonderful place called Portaferry!

Check out all that's on offer and book your places for a fabulous weekend at:



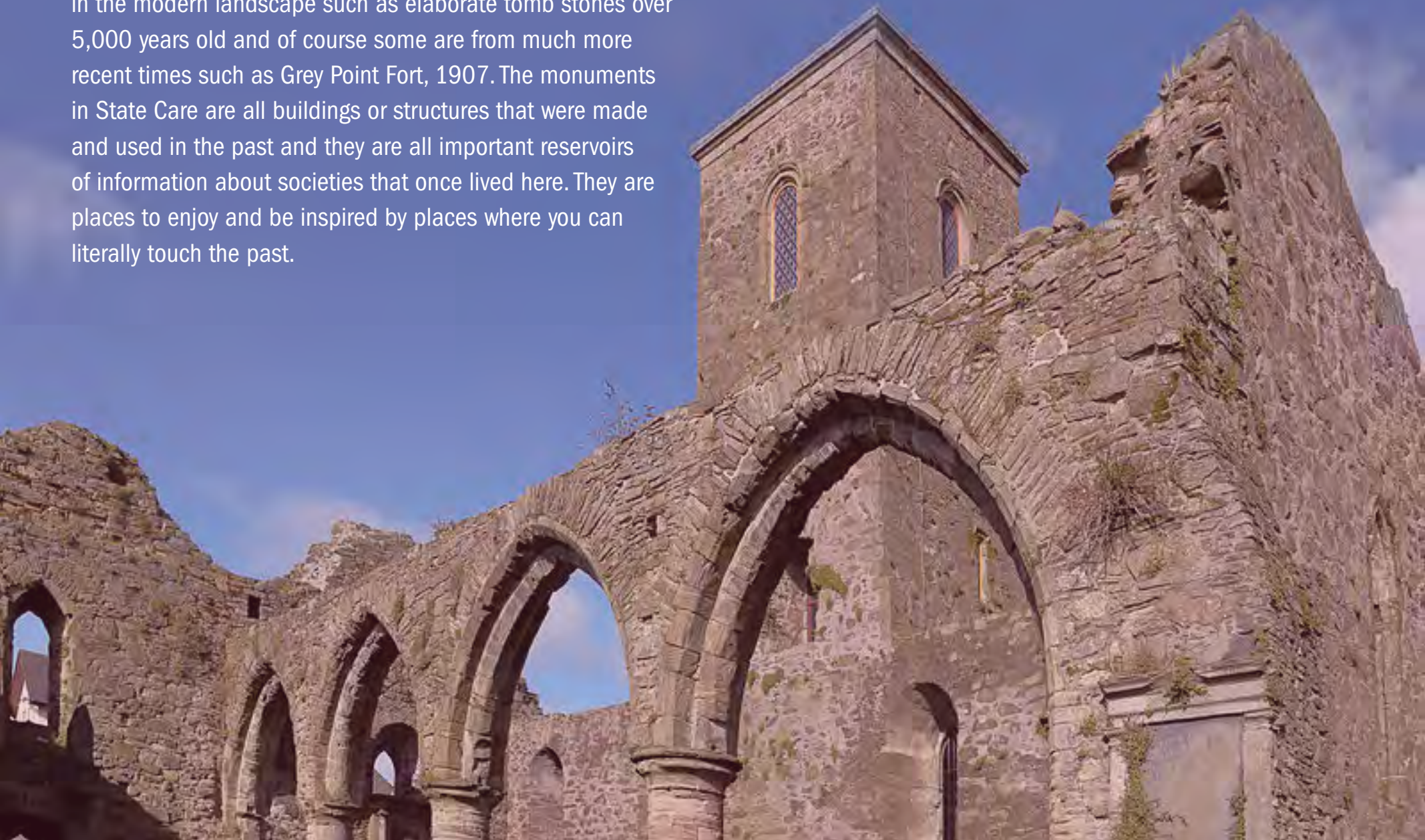
Scan the QR using your phone to access more details.

Facebook: **@portaferryheritagefest**

HISTORIC MONUMENTS IN STATE CARE

Northern Ireland's historic monuments form a key part of our historic environment, and 187 monuments are protected in State Care. Some are grand structures, surviving today as imposing cliff top ruins, mysterious settings of stones or great earthworks. Some were everyday places where ordinary things happened – farmsteads, sites of industry or places of worship. Some are amongst the oldest structures to survive in the modern landscape such as elaborate tomb stones over 5,000 years old and of course some are from much more recent times such as Grey Point Fort, 1907. The monuments in State Care are all buildings or structures that were made and used in the past and they are all important reservoirs of information about societies that once lived here. They are places to enjoy and be inspired by places where you can literally touch the past.

As you are exploring other venues in the vicinity throughout this EHOD weekend we hope you will be encouraged to visit some of this diverse resource of monuments in State Care which is part of our rich archaeological heritage. Monuments that are open and accessible for EHOD weekend are listed throughout the Brochure and are easily identified by the State Care Monument Icon.



Contents

Introduction 02

Openers

County Antrim 13

County Armagh 68

Belfast 95

County Down 159

County Fermanagh 210

County Derry/Londonderry 223

County Tyrone 249

Our brochure is designed to give you a flavour of all the events that are happening across Northern Ireland this weekend for European Heritage Open Days. The website, however, will provide greater details including images, directions for those harder to find properties and a full description of properties and events.

Visit the website:

www.discovernorthernireland.com/ehod

or follow us on Facebook: /loveheritageni

Instagram: @loveheritageni

Feedback

European Heritage Open Days Feedback Form

Please take a few minutes to complete this form and tell us what you think about European Heritage Open Days. All your comments will help us make this event even better!

[Link to survey Monkey.](#)



County Antrim

51

 Openers & Events


Family Activities



Living History



State Care Monument



Walk/Talk/Tour



Performance/Music



Festival



Listed Building



Self Guided



Garden



Events/Exhibition



Only open for EHOD



Tick off your visits

Visit www.discovernorthernireland.com/ehod for more information on what's on in County Antrim.

County Antrim Accessibility Icons



Designated Parking/Drop-off Point



Rest Seating Available



Lift/Stairlift



Ramped Access



Accessible Toilet



Level Access



Baby Changing Facilities



Firm Terrain/Paths



Induction Loop



None



Literature in alternative formats,
e.g. large print/braille



Christ Church Cathedral Lisburn

24a Castle Street, Entrance Via Market Square,
Lisburn, Antrim BT27 4XD



Lisburn Cathedral is the Cathedral of the Church of Ireland Diocese of Connor (County Antrim and small parts of Counties Down and Londonderry). The site was built in 1623 by Sir Fulke Conway adjacent to his new castle. The church was destroyed during a battle in 1641 and rebuilt and in 1662 King Charles 2nd granted Cathedral Status. In 1707 most of Lisburn, including the Cathedral was destroyed in a fire. The current building dates from 1717.

ADDITIONAL INFORMATION

Tour on demand - there will be a pool of guides available.

OPENING TIMES

Sat: 10:00 - 16:00

Sun: 14:00 - 16:00

ACCESSIBILITY



SPACE . . .

R-Space gallery @ Linen Rooms Lisburn

32 Castle Street, Lisburn,
Antrim BT27 4XE

32



E/E



The longest linen tablecloth and runner in Northern Ireland. Drop in with artists Emma Whitehedd and Anthea McWilliams to see the current longest linen table cloth and table runner being made longer. Chat to the artists and try some stitching yourself or simply observe. There will also be a chance to watch/try some folding of tablecloths (to music), share any stories linked to linen and hear about plans for the next Linen Biennale in 2025.

OPENING TIMES

Sat: 11:00 - 17:00

ACCESSIBILITY



Ulster Aviation Society

Via Gate 3 - Maze Long Kesh, 94 Halftown Road,
Lisburn, Antrim BT27 5RF



Ulster Aviation Society ('UAS') is a Non-Profit Charity outside Lisburn, with an active Museum containing over 54+ Aircraft & Vehicles, plus many display rooms, entirely run by voluntary enthusiasts. Some aircraft may have active demonstrations.

OPENING TIMES

Sat: 10:00 - 17:00

Sun: 10:00 - 17:00

ACCESSIBILITY





Ballinderry War Memorial Hall

10a North Street, Upper Ballinderry, Lisburn,
Antrim BT28 2JB



Grade B1 listed - The foundation stone was laid Saturday July 5 1924 and had been part of a stone from the local church. Opening of the hall was 7th-8th November 1924. For EHOD enjoy a World War exhibition, cream tea, live music performances and fun day.

OPENING TIMES

Sat: 10:00 - 16:00

ACCESSIBILITY





Ballinderry Middle Church

Lower Ballinderry Road, Upper Ballinderry,
Lisburn, Antrim BT28 2JF



Tours of a plantation-era 'barn church'. Be guided by one of our enthusiastic volunteers, or feel free to wander at your own pace and enjoy the simplicity of the church at leisure. Written information will be provided to keep you informed as you walk around.

OPENING TIMES
Sat: 11:00 - 16:00

ACCESSIBILITY





St. Catherine's Parish Church

Crumlin Road, Killead, Aldergrove,
Antrim BT29 4AQ



Erected 1712, restored 2003-2004. In 1885 J.J. Philips was the architect for major alterations to the building. A fine gothic revival church with Bell-cote and Lych gate. Interesting stained glass windows including one by W.W. Morris of Westminster. There are 46 war graves dating from 1st World War. Refreshments available, the church will be open for tea and coffee in the afternoon.

ADDITIONAL INFORMATION

Directions: Killead Road, Access via military base, approach from Killead village or Randox Road. ID Required to access.

OPENING TIMES

Sat: 15:00 - 17:00

Sun: 15:00 - 17:00

ACCESSIBILITY



The Ballance House

118a Lisburn Road, Glenavy,
Antrim BT29 4NY



The restored 19th century Ballance House is the birthplace of John Ballance, a former prime minister of New Zealand. Take a self-guided tour of the restored victorian parlour, visit 'The Ulster New Zealand Story' exhibition and chat with our knowledgeable guides. The Ballance House showcases the many special connections between Northern Ireland and New Zealand and works to develop cultural links and interchange between the two countries. Finish

your visit with a stroll round the restored farming exhibition. Light refreshments available.

OPENING TIMES
Sun: 14:00 - 17:00

ACCESSIBILITY





Sentry Hill Harvest Fair

Sentry Hill Historic House, 40 Ballycraigy Road,
Newtownabbey, Antrim BT36 4SX



Sentry Hill is a 19th Century farmhouse where the McKinney family lived and built their fortunes. Come along to the harvest fair where you can step back in time. Enjoy a house tour, a farming exhibition, craft activities, folklore storytelling, photography exhibit, food and drink, and other fair activities at Sentry Hill.

ADDITIONAL INFORMATION

House tour hourly.

OPENING TIMES

Sat: 10:30 - 16:30

ACCESSIBILITY





NIFHS Research Library

Unit C4, Valley Business Centre, 67 Church Road,
Newtownabbey, Antrim BT36 7LS



The NIFHS Library has an array of family history research materials that includes church and graveyard descriptions, a collection of Family Trees and indexes of people's names from many resources.

ADDITIONAL INFORMATION

Tours hourly 11:00 - 15:00

OPENING TIMES

Sat: 11:00 - 16:00

ACCESSIBILITY



Abbeydene House

20 Abbeydene Manor, Newtownabbey,
Antrim BT37 9JQ



Abbeydene House is a Lanyon built victorian mansion overlooking Belfast Lough which is only open for EHOD. Owners include Lanyon's son, Edward Robinson(of Robinson and Cleaver) and Sir Crawford McCullagh, Lord Mayor of Belfast and instigator of the global Silence of Remembrance.

OPENING TIMES

Sat: 11:00 - 17:00

Sun: 11:00 - 17:00

ACCESSIBILITY



Whitehead Railway Museum

Castleview Road, Whitehead,
Antrim BT38 9NA



The award-winning Whitehead Railway Museum is a must-see for anyone with an interest in trains, railway heritage or local history. The five galleries include a signal box where you can pull the levers to change a signal. See the giants of steam close up and walk through historic carriages including the saloon in which the Queen travelled in 1953. Don't miss the viewing gallery overlooking the

locomotive workshops. Along the way, you will learn how railways facilitated social change and made travel accessible for everyone.

ADDITIONAL INFORMATION

Admission to Whitehead Railway Museum is free as part of EHOD.

OPENING TIMES

Sat: 11:00 - 15:00

ACCESSIBILITY



St Nicholas Church of Ireland

3 Market Place, Carrickfergus,
Antrim BT38 7AW



Originally constructed by John D'Courcy in 1182, the church has served as a navigational aid and key feature of Carrickfergus town ever since. There are many interesting and historical features including a crooked aisle, immortalised by the poet Louis McNiece in his poem Carrickfergus. Tours available hourly.

ADDITIONAL INFORMATION

Tours hourly.

OPENING TIMES

Sat: 10:00 - 16:00

Sun: 12:30 - 16:00

ACCESSIBILITY



Carrickfergus Castle

Marine Highway, Carrickfergus
Antrim BT38 7BG



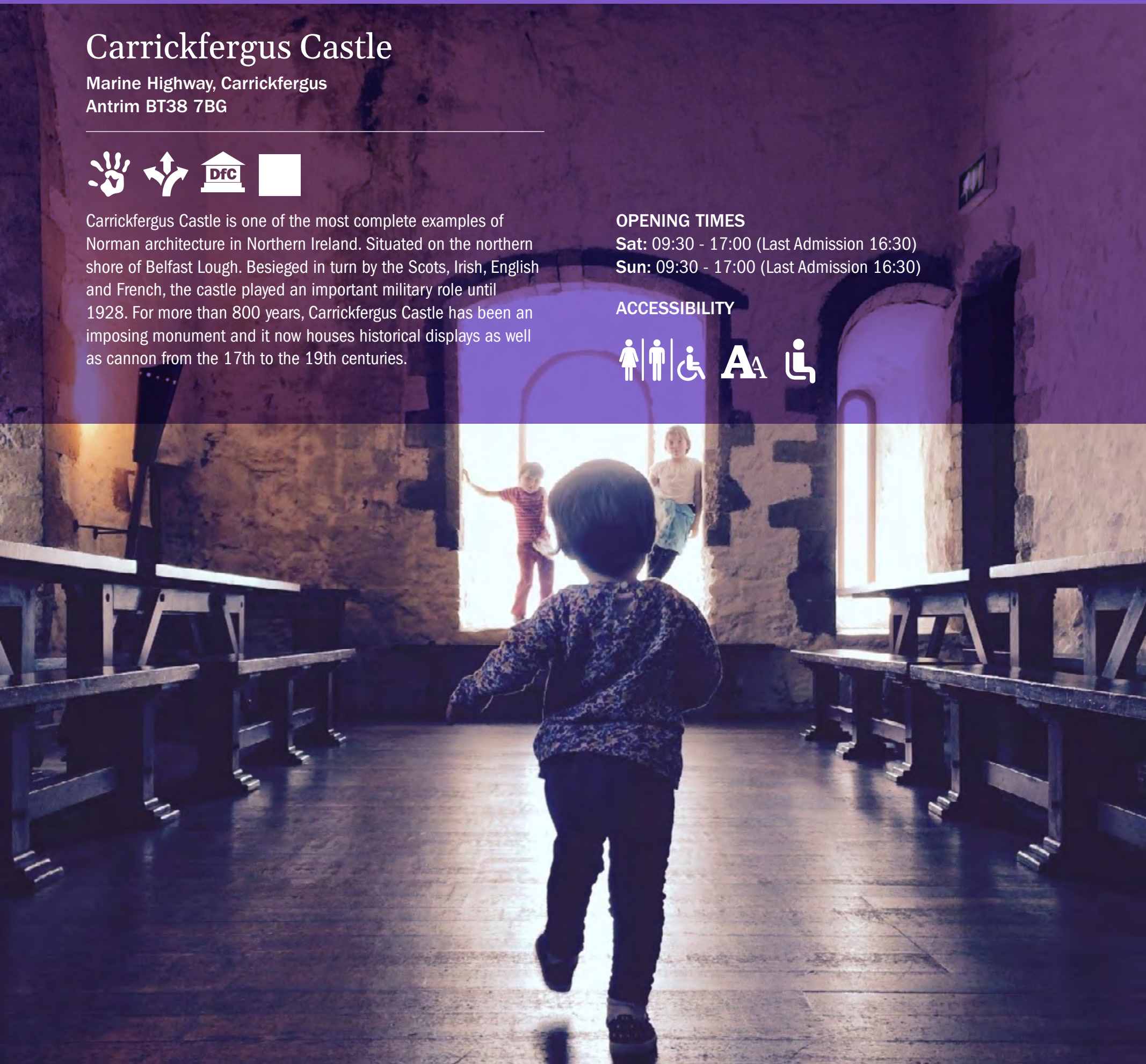
Carrickfergus Castle is one of the most complete examples of Norman architecture in Northern Ireland. Situated on the northern shore of Belfast Lough. Besieged in turn by the Scots, Irish, English and French, the castle played an important military role until 1928. For more than 800 years, Carrickfergus Castle has been an imposing monument and it now houses historical displays as well as cannon from the 17th to the 19th centuries.

OPENING TIMES

Sat: 09:30 - 17:00 (Last Admission 16:30)

Sun: 09:30 - 17:00 (Last Admission 16:30)

ACCESSIBILITY



Sheils Buildings Carrickfergus

21 Sheills Buildings, 48 Larne Road, Carrickfergus
Antrim BT38 7EA



The Charles Sheils community is offering guided tours of the grounds of the Charles Sheils Houses in Carrickfergus. The B2 listed buildings date back to 1868. Charles Sheils Buildings architect was ~Charles Lanyon, who was famous for his involvement with the Antrim Coast Road attraction. As it is a residential site, on offer for European Heritage Open Day 2024 is an external viewing of the architecture only.

ADDITIONAL INFORMATION

Tours available as required.

OPENING TIMES

Sat: 12:00 - 16:00

ACCESSIBILITY



Andrew Jackson Cottage and US Rangers Museum

2 Boneybefore, Carrickfergus,
Antrim BT38 7EG



During the weekend we look forward to welcoming resident crafter Mary, who will be demonstrating the traditional art of spinning. Come along and enjoy the demonstration and join tour guide George to hear the history of the cottage and Carrickfergus' connection to the elite commando unit the 'US Rangers'.

ADDITIONAL INFORMATION

Tours running throughout the day on an ad hoc basis.

OPENING TIMES

Sat: 11:00 - 15:00

Sun: 11:00 - 15:00

ACCESSIBILITY



Blackhead Lightkeepers' Houses

Mc Crea's Brae, Whitehead,
Antrim BT38 9NZ



Visitors have the opportunity to see the conservation work of Irish Landmark while enjoying a self-guided tour of these restored Lightkeepers' houses. Built during the glory days of Belfast's shipping era, the lighthouse was important in guiding vessels, including the Titanic, from the famous shipyard of Harland & Wolff out of Belfast Lough.

BOOKING REQUIRED

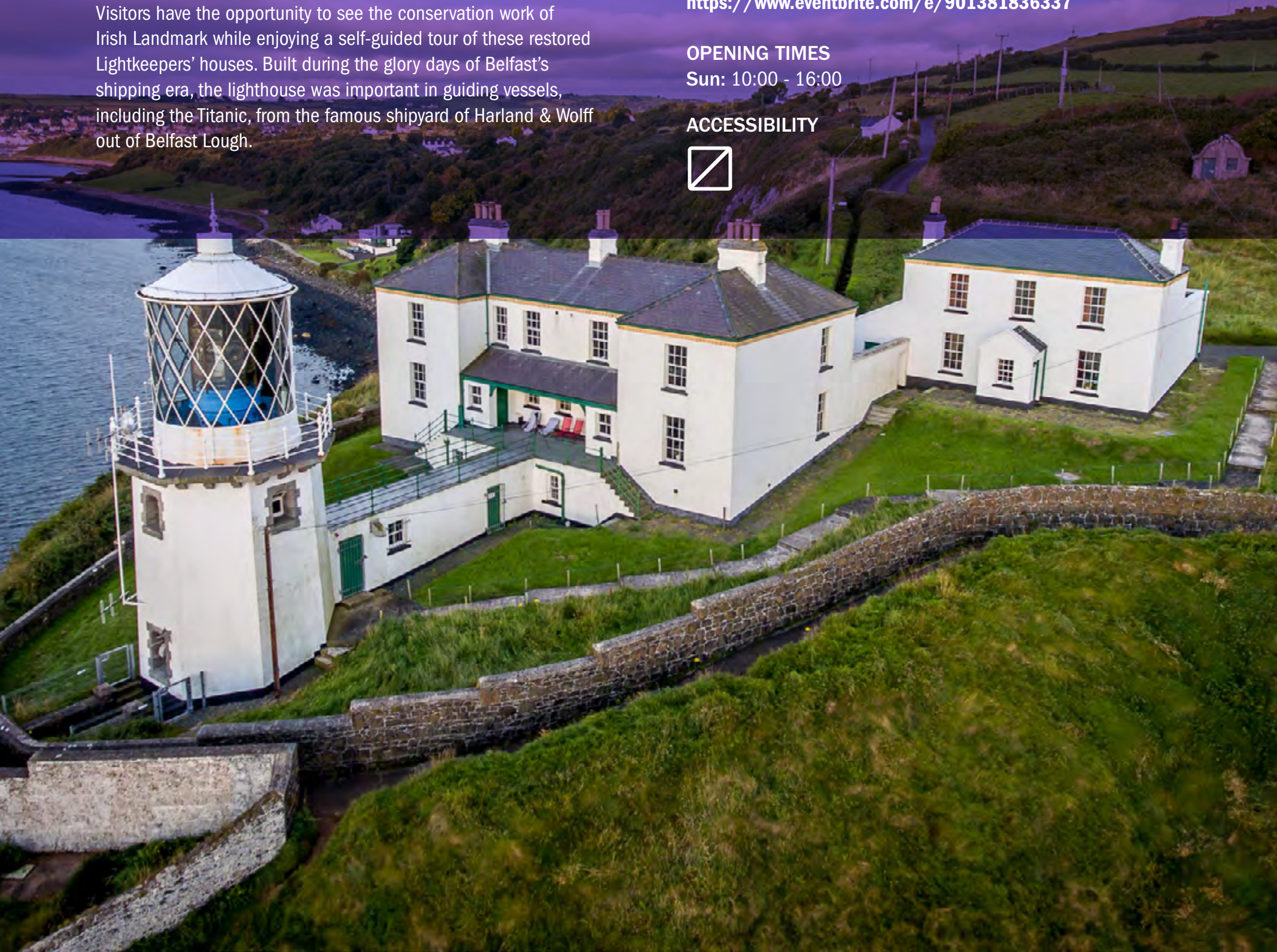
Book via eventbrite.

<https://www.eventbrite.com/e/901381836337>

OPENING TIMES

Sun: 10:00 - 16:00

ACCESSIBILITY



Tours of The Victorian House

The Gallery Whitehead, 19 Cable Road, Whitehead,
Antrim BT38 9PY



During the Victorian House Tour there will also be an art exhibition of Victorian paintings and prints in the art gallery - The Gallery Whitehead which is in the Victorian house within the conservation area of Whitehead.

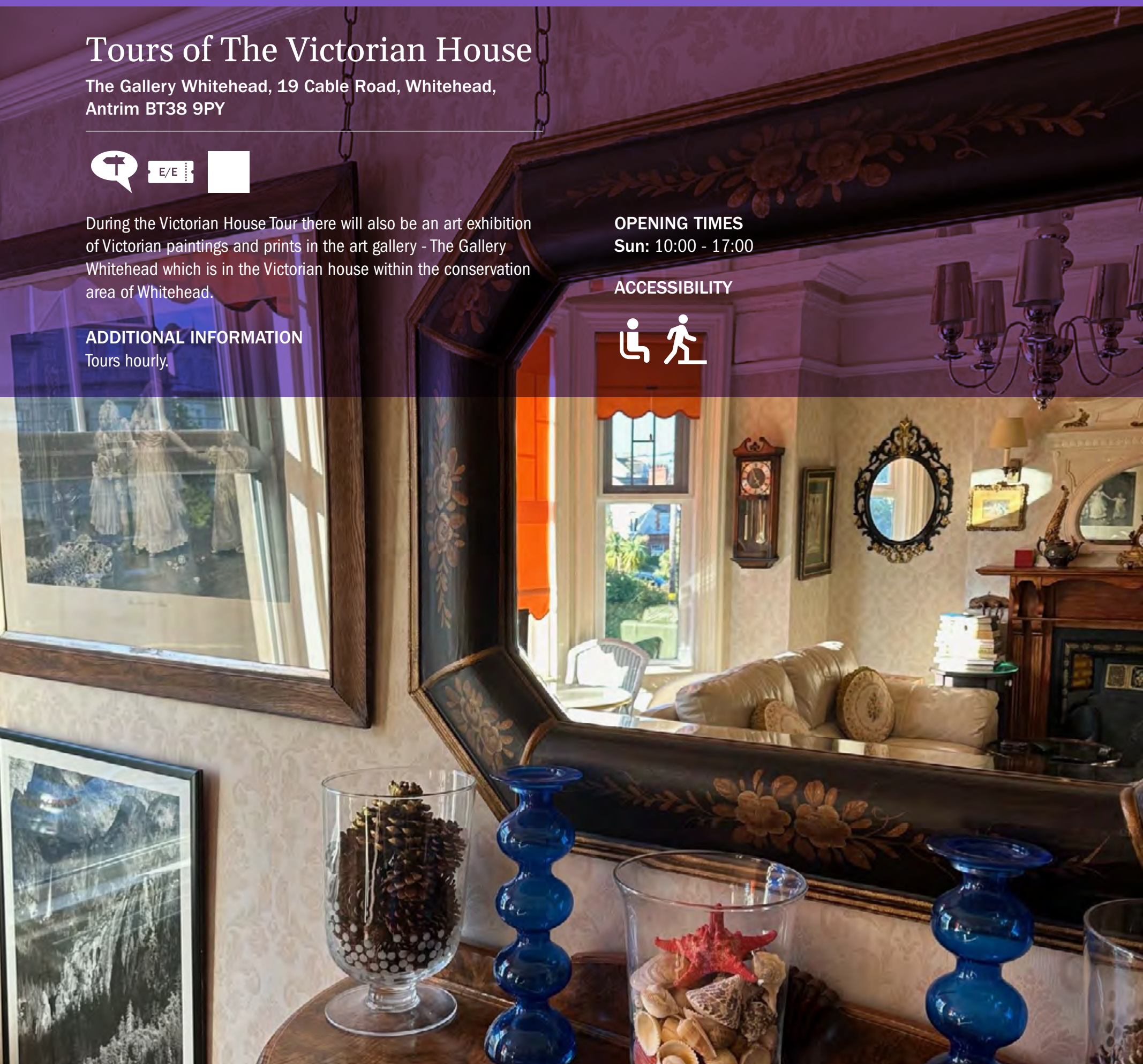
ADDITIONAL INFORMATION

Tours hourly.

OPENING TIMES

Sun: 10:00 - 17:00

ACCESSIBILITY



Drumalis Retreat and Conference Centre

47 Glenarm Road, Drumalis, Larne, Antrim BT40 1DT



Drumalis is a retreat and conference centre in Larne, County Antrim. As well as an in-house programme, the facilities at Drumalis provide an excellent venue for groups to organise their own events. Visitors can enjoy tours of the listed building, which forms part of the centre, walk in the grounds or browse the historical displays. There will also be craft activities for children. Sweet or savoury afternoon teas will be available in the Dining Room (additional charge).

ADDITIONAL INFORMATION

Tours will be on-going throughout afternoon

OPENING TIMES

Sat: 12:00 - 16:00

ACCESSIBILITY





Larne Museum & Arts Centre

2 Victoria Road, Larne,
Antrim BT40 1RN



Larne Museum & Arts Centre is housed in the historic former Carnegie Free Library building in Larne. The Main Gallery explores the agricultural, industrial, military and maritime history of the area.

OPENING TIMES

Sat: 10:00 - 16:00

ACCESSIBILITY





“From Library to Museum: the Story of Larne Museum & Arts Centre” - a talk by Marian Kelso

Larne Museum & Arts Centre, 2 Victoria
Road, Larne, Antrim BT40 1RN



This talk takes a look at the history of libraries in the town and finds out about the very first museum before looking at the building of Larne Carnegie Free Library and the development of Victoria Road.

BOOKING REQUIRED

This is a free event, however places are limited and should be booked in advance by contacting Larne Museum & Arts Centre on **028 2826 2443** or by emailing **marian.kelso@midandeastantrim.gov.uk**.

OPENING TIMES

Sat: 14:00 - 15:00

ACCESSIBILITY





St Patrick's Church

98 Ballymullock Road, Cairncastle, Larne
Antrim BT40 1RN



St Patrick's Church of Ireland is located on Ballymullock Road, near Cairncastle, and looks down onto the scenic Ballygally bay. A place of antiquity, and still an active centre of worship, St Patrick's was the site of a medieval church appearing in the papal taxation of 1306 as Karkastell. All are also welcome to join the congregation for a service of Morning Prayer 1130-1230 on Sun 15th. Teas/ coffees and traybakes available.

OPENING TIMES

Sat: 10:00 - 17:00

Sun: 13:00 - 17:30

ACCESSIBILITY





Randalstown Conservation Area

Randalstown, Antrim, Antrim BT41



Enjoy a stroll around this multi award-winning town, a designated conservation area since 1995. Take in the views from the viaduct, a masterpiece of victorian railway engineering and home to the distinctive Elevation community garden.

OPENING TIMES

Sat: Open Site.

Sun: Open Site.

ACCESSIBILITY



Toomebridge Lock Keepers Cottage

10 Railway Road, Toomebridge,
Antrim BT41 3SA



TIDAL is a member of the Rural Community Network and seeks to preserve cultural and social heritage in the community, responsible for the restoration and re-development of the local heritage site the Lock Keeper's Cottage into an exhibition and cafe, and maintains the walkway and gardens along Toome Canal Trail.

ADDITIONAL INFORMATION

One tour from 18:00-19:00 of the Canal Walk and Lock Keeper's Cottage on both Saturday 14 and Sunday 15 September 2024.

BOOKING REQUIRED

<https://ehod.eventcube.io/events>

OPENING TIMES

Sat: 12:00 - 16:00

Sun: 12:00 - 16:00

ACCESSIBILITY



Storytelling at Pogue's Entry

Pogue's Entry, Church Street, Antrim
Antrim BT41 4BD



Pogue's Entry contains the childhood home of Alexander Irvine, who became a missionary in New York's Bowery and eventually pastor of the Church of the Ascension on Fifth Avenue. His book 'My Lady of The Chimney Corner' recalls his boyhood years in Pogue's Entry and describes the lives of Irish country folk during the postfamine days. We invite you to Pogue's Entry for a day of folklore storytelling and readings suitable for all the family!

OPENING TIMES

Sun: 11:00 - 16:00

ACCESSIBILITY



All Saints' Parish Church, Antrim

Church Street, Church Street,
Antrim BT41 4BE



All Saints', Antrim, built in 1596 stands at the heart of the town, occupying a site once of strategic significance during the 1798 Battle of Antrim. As one of the oldest parish churches still in use, it has a magnificent collection of stained glass and funereal monuments. Built on a medieval burial ground, the graveyard has some 18th century headstones and a memorial stone to Dr Alexander Irvine, esteemed author of "My Lady of the Chimney Corner".

ADDITIONAL INFORMATION

Self guided tours from 10.00 Saturday and 14.00 Sunday

OPENING TIMES

Sat: 10:00 - 14:00

Sun: 14:00 - 16:00

ACCESSIBILITY





Lough Neagh WWII Tour: Reading the Landscape

Antrim Lough Shore Park, Lough Road,
Lisburn, Antrim BT41 4DG



Discover Lough Neagh's World War II aviation legacy, including key airfields on the shores of Lough Neagh. Begin in Antrim, exploring Aldergrove airfield and torpedo platforms. Enjoy lunch at the Lock Keeper's Cottage before journeying to Ballyronan Marina and Cluntoe/Ardboe to delve into the region's wartime significance. Ardboe boasts a rich built heritage with intact runways and various structures. Join us as we uncover Lough Neagh's historical transport hub, spotlighting its World War II significance.

BOOKING REQUIRED

only 30 tickets available, free of charge.

Online booking link <https://loughneagh.glistrr.com/e/123>

OPENING TIMES

Sat: 10:00 - 16:00

ACCESSIBILITY



Arthur Cottage

Dreen Road, Cullybackey,
Antrim BT42 1EB



Come along this weekend to enjoy some freshly baked soda's straight from the griddle over the Arthur Cottage fire. Enjoy learning how to make corn dollies and hear about the Arthur family and how they lived at the Dreen, with one of the family members making it all the way from the Whitewashed Cottage to the White House.

ADDITIONAL INFORMATION

Tours and demonstrations throughout the day

OPENING TIMES

Sat: 11:00 - 15:00

Sun: 11:00 - 15:00

ACCESSIBILITY



Galgorm Cottage

23-25 Fenaghy Road, Galgorm, Ballymena,
Antrim BT42 1HW



In the village of Galgorm the cottages were believed to be originally built sometime in the late 1600s. With thatched roof it was originally two separate dwellings, one cottage being used in 1724 as a police station. It is still possible to see the police cell below the cottage opening out from below the original building to the rear. The front doors are of a wooden chevron construction. In more recent times the cottages became one dwelling and was recently re-thatched in February 2019.

ADDITIONAL INFORMATION

Tours Every 30 minutes.

OPENING TIMES

Sat: 10:00 - 15:00

ACCESSIBILITY



Gracehill Moravian Church

25 Church Road, Gracehill,
Antrim BT42 2NL



The church at the heart of this beautiful Moravian settlement was completed in 1765. It is flanked by the minister's and warden's houses. Discover the fascinating history and see the unique burial ground.

ADDITIONAL INFORMATION

Talks hourly - 13:00, 14:00, 15:00 and 16:00.

OPENING TIMES

Sat: 12:30 - 17:00

ACCESSIBILITY





Gracehill Conservation Area

Starting at Church Doors, 25 Church Road, Gracehill, Antrim BT42 2NL



Gracehill, a fascinating 18th century village is Northern Ireland's first Conservation Area and the only complete Moravian Settlement in Ireland. Enjoy guided tours, films, entry to buildings, scenic walks and teas and crafts.

ADDITIONAL INFORMATION

Guided Walking Tours around the square hourly 12.30, 13.30, 14.30, 15.30 and 16.30

OPENING TIMES

Sat: 12:30 - 16:30

ACCESSIBILITY





The Old School, Gracehill

19A Church Rd, Gracehill,
Antrim BT42 2NL



An original settlement building dating from 1765, it has been restored by Gracehill Trust and is now home to a visitor facility, restaurant, after school club, business units and a restored 1820's classroom. Films shown here throughout the day.

OPENING TIMES

Sat: 12:30 - 17:00

ACCESSIBILITY





Single Brethren House

8 Montgomery St, Gracehill,
Antrim BT42 2NN



This four storey house of squared basalt was built in 1819 on the site of a previous dwelling. It provided accommodation for the single men as well as for a school and bank. Once community housing for the settlement, it is now privately owned.

BOOKING REQUIRED

<https://ehod24singlebrethrenhouse.eventbrite.co.uk>

OPENING TIMES

Sat: 12:30 - 17:00

ACCESSIBILITY





The Old Shop, Gracehill

4-6 Montgomery Street,
Gracehill, Antrim BT42 2NN



Call at The Old Village Shop and hear about Gracehill Trust's ongoing restoration of this key settlement building and the historic postal links to the United States.

OPENING TIMES

Sat: 12:30 - 17:00

ACCESSIBILITY



Origami House

14 Whappstown Road, Kells,
Ballymena, Antrim BT42 3NX



Nestled on the edge of the captivating Glens of Antrim, The Origami House, by award-winning architect Jane Burnside, stands as a testament to contemporary architecture. The Origami House has captivated architecture enthusiasts worldwide. For the past fifteen years, architect and owner Jane Burnside has graciously welcomed visitors to immerse themselves in the magic of The Origami House. Join Burnside, also the author of 'Contemporary Design Secrets: The Art of Building a House in the Countryside,' on a personally guided tour of her home and studio. Delve into the secrets behind designing this iconic structure, learning from the visionary architect herself.

ADDITIONAL INFORMATION

Sunday: one tour only. 11-12noon Maximum 20 people for the tour. Minimum group booking 2 people due to parking availability.

BOOKING REQUIRED

<https://ehod.eventcube.io/events>

OPENING TIMES

Sun: 11:00 - 12:00

ACCESSIBILITY



Broughshane Museum

Broughshane House, 70 Main Street,
Broughshane Antrim BT424JW

E/E

Broughshane Museum is on the third floor of Broughshane House. It houses a collection of over 8000 items. Most of which are every day articles, that stimulate memories of older visitors, and educate younger visitors as to what life was like for their parents and grandparents. Come along and learn about the links and connections far and wide. As well as the artefacts on display there's a collection of videos the History Society has made.

OPENING TIMES

Sat: 11:00 - 15:00

Sun: 13:00 - 16:00

ACCESSIBILITY





Ballymena Town Hall Centenary Guided Tour

The Braid, 1-29 Bridge Street,
Ballymena, Antrim BT43 5EJ



Dominating the skyline from the southern approaches of the town, the present Town Hall was constructed between 1924-1928, replacing an earlier town hall which had been destroyed by fire in 1919. To celebrate the centenary of the laying of the foundation stone in July 1924 by HRH The Duke of York (later King George VI) residents and visitors are invited to join museum staff to explore the civic areas of this Grade II listed building. Also included is a 'Behind the Scenes' tour of Mid-Antrim Museum's Collection Store a wonderful opportunity to examine some of the museum's 8,000 artefacts.

ADDITIONAL INFORMATION

Tour at 11:00 Saturday 14 September 2024.
One tour only.

OPENING TIMES

Sat: 11:00 (One Tour only)

ACCESSIBILITY





Carnlough Heritage Hub

Town Hall, Harbour Road, Carnlough,
Antrim BT43 5EJ



The interpretation display in The Heritage Hub at Carnlough Town Hall features stories of the limestone quarrying in Carnlough, iron mining in Glenravel and other industries of the Glens of Antrim in the 19th and early 20th centuries. It also celebrates Carnlough's harbour, its maritime connections, the area's beautiful scenery, geology, wildlife and natural resources. It also explores the history of settlers from the Stone Age to the industrialists of the 19th

Century. The Town Hall was built in 1856 as an important part of the infrastructure servicing the growth of the limestone industry in Carnlough.

OPENING TIMES

Sat: 14:00 - 17:00

Sun: 14:00 - 17:00

ACCESSIBILITY





Barbican Gate Lodge

Glenarm Castle Estate,
Glenarm, Antrim BT44 0BQ



Visitors have the opportunity to see the conservation work of Irish Landmark Trust while enjoying a self-guided tour of this restored gate lodge. Built in 1825, this romantic miniature castle with turrets and battlements is now available as holiday accommodation.

BOOKING REQUIRED

To book tickets please visit:

<https://www.eventbrite.ie/e/905971223317>

OPENING TIMES

Sun: 10:00 - 16:00

ACCESSIBILITY





Frances Anne Vane Tempest Marchioness of Londonderry; Routes, Connections and Networks

**Carnlough Heritage Hub, Harbour Road,
Carnlough, Antrim BT44 0EU**



Carnlough historian Mary Watson will give a talk, at Carnlough Heritage Hub, Town Hall 7pm Saturday 14th, exploring how Frances Anne Vane-Tempest (1800 - 1865) connected with people across Europe in her travels, with her business interests and her passion for many residences around Ireland and England. Frances Anne, Marchioness of Londonderry, was a very successful business manager who played an important role in the development of Carnlough. Mary Watson's talk will examine the fascinating life of this unique lady. Refreshments will be served.

ADDITIONAL INFORMATION

The talk will take place in the Heritage Hub at Carnlough Town Hall on Saturday 14 September starting at 19:00. One talk only.

OPENING TIMES

Sat: 19:00-20:30

ACCESSIBILITY





The Old Church Centre

1 Church Lane, Cushendun, Ballymena ,
Antrim BT44 0PG



Opened 2019 in a lovely 19C church (deconsecrated 2003), the Old Church Centre is a thriving heritage, arts and community space exhibiting work by prize winning photographer Cathal McNaughton for EHOD.

OPENING TIMES

Sat: 11:00 - 17:00

ACCESSIBILITY





Drumtullagh Parish Church

20 Lisnagat Road, Armoy, Ballymoney,
Antrim BT53 8UN



Visitors will be able to view the Lanyon-designed architecture of the building and its Art Deco-style stained glass windows. On display will be a wide range of parish records going back to the mid-1800s, which will appeal to visitors who are interested in the general social history of the area, and to those who are interested in tracing family trees, supported by information on some of the

gravestones in the adjoining churchyard. The display will include maps, photographs, books and other literature pertaining to the church.

OPENING TIMES

Sat: 10:00 - 16:00

Sun: 11:00 - 16:00

ACCESSIBILITY





Ballintoy Parish Church

Harbour Road, Ballintoy, Ballycastle,
Antrim BT54



Ballintoy Parish Church is one of the most iconic churches on the North Coast, it is steeped in history.

BOOKING REQUIRED

Tours available as required.

OPENING TIMES

Sat: 10:00 - 18:00

Sun: 10:00 (Service at 11.30) - 18:00

ACCESSIBILITY





Kinbane Castle

Whitepark Road, Ballycastle, Antrim BT54 6GA



Dramatically sited on the 'ceann bán', gaelic for 'white (chalk) headland', in a position of great natural strength. Reported to have been built by Colla MacDonnell shortly before 1551, it is known to have been captured and partly destroyed by the English in that year but was reoccupied and traditionally used until the mid-18th century. The main surviving masonry is the tower at the south angle, two stories high with good detail visible. PLEASE NOTE: This site is dangerous because of eroding rock and steep drops. Great care is needed. The rock is not safe beyond the castle

OPENING TIMES

Sat: Open Site.

Sun: Open Site.

ACCESSIBILITY





Carrick a Rede: Gateway to the North Atlantic

119a Whitepark Road, Ballintoy, Antrim BT54 6LS



Join us for a guided tour of this wonderful attraction. As well as being the Rock in the Road, Carrick-a-Rede Island is the gateway to the Atlantic as we leave the Irish Sea behind. Come and hear tales about the routes, connections and networks associated with our famous site.

BOOKING REQUIRED

<https://ehod.eventcube.io/events>

OPENING TIMES

Sat: 14:00

ACCESSIBILITY



Druid's Stone, Ballintoy

134 Whitepark Road, Ballintoy, Ballycastle
Antrim BT54 6ND



A guided walk exploring the Druid's Stone, a prehistoric passage tomb on the outskirts of Ballintoy in the Causeway Coast Area of Outstanding Natural Beauty.

ADDITIONAL INFORMATION

One tour on Saturday 14 September 11.00 - 12.30.

BOOKING REQUIRED

Numbers limited to 15 people. Booking via Causeway Coast & Glens Heritage Trust eventbrite <https://www.eventbrite.com/o/causeway-coast-amp-glens-heritage-trust-16737459784>

OPENING TIMES

Sat: 11:00 - 12:30

ACCESSIBILITY



Magherintemple Lodge

51 Churchfiled Road, Ballycastle,
Antrim BT54 6PN



Visitors have the opportunity to see the conservation work of Irish Landmark while enjoying a self-guided tour of this restored gatelodge. Built in 1874 with stepped gables and ball finials, this Scottish Baronial style lodge makes a fitting entrance to the Magherintemple Estate, seat of the Casement family.

BOOKING REQUIRED

Please visit our eventbrite page to make your booking:
<https://www.eventbrite.com/e/901377613707>

OPENING TIMES

Sun: 10:00 - 16:00

ACCESSIBILITY





Bonamargy Friary

43 Cushendall Rd, Ballycastle, Antrim BT54 6QR



Bonamargy Friary was built close to the mouth of the Carey and Shesk rivers by Rory MacQuillan in 1500. The rival MacDonnell clan fought for and claimed the friary from the MacQuillans in 1588. The cloister, gatehouse, altar and church are well preserved except for the thatch roof. There are many interesting features including the east window, a staircase and a sealed burial vault. The coffins of several Earls of Ulster and chieftain, Sorley Boy MacDonnell, lie within.

OPENING TIMES

Sat: Open Site.

Sun: Open Site.

ACCESSIBILITY



The Courthouse Shared Space Creative Hub

75 Main Street, Bushmills,
Antrim BT57 8QB



Visit the beautifully restored and extended (Grade B1 listed) Courthouse Shared Space Creative Hub - poised to become a premier destination on the North Coast for arts, crafts, heritage, tourism, and culinary experiences. Built by the Macnaghten family of Dundarave Estate in c.1834, the building served as a Petty Session Court until c.1938, after which, it was occupied as a private residence. Vacant since 1972, it was placed on the At

Risk Register in 2004. Enterprise Causeway acquired the property in 2016, through the financial support of the European Union's PEACE IV Programme.

OPENING TIMES

Sat: 10:00 - 17:00

ACCESSIBILITY





The Kiln Wing

143 Main Street, Bushmills,
Antrim BT57 8TP



Visitors have the opportunity to see the conservation work of Irish Landmark Trust while enjoying a self-guided tour of this restored gate lodge. Built in 1800, this romantic castellated building is now available as holiday accommodation sleeping two people.

BOOKING REQUIRED

Please click on our eventbrite link to book your tickets.

<https://www.eventbrite.com/e/901344514707>

OPENING TIMES

Sun: 10:00 - 16:00

ACCESSIBILITY



Causeway Connections: Worldwide links to our Heritage

44 Causeway Road, Bushmills
Antrim BT57 8SU



Visit the famous Giant's Causeway and hear about some of our lesser-known connections - local, international and intercontinental. You'll be surprised just how far our heritage extends!

BOOKING REQUIRED

<https://ehod.eventcube.io/event>

OPENING TIMES

Sat: 11:00

ACCESSIBILITY



Drum Gatelodge

Riverside Road, Ballylough Estate, Bushmills,
Antrim BT57 8TP



Visitors have the opportunity to see the conservation work of Irish Landmark Trust while enjoying a self-guided tour of this restored gatelodge. Built in 1800, this romantic castellated building is now available as holiday accommodation sleeping two people.

BOOKING REQUIRED

Please click on our eventbrite link to book your tickets.

<https://www.eventbrite.com/e/901344514707>

OPENING TIMES

Sun: 10:00 - 16:00

ACCESSIBILITY





Dunluce Castle

87 Dunluce Road, Bushmills, Nr Portrush,
Antrim BT57 8UY



The iconic Dunluce Castle on the dramatic coastal cliffs of north Antrim was built by the MacQuillan family around 1500. Seized by the MacDonnell clan in the 1550s, they stamped their mark on the castle during an era of violence, intrigue and rebellion. In the 17th century Dunluce was the seat of the earls of Antrim. The dramatic history is matched by tales of a banshee and how the castle kitchens fell into the sea one stormy night in 1639.

OPENING TIMES

Sat: 09:30 - 17:00 (Last Admission 16:30)

Sun: 09:30 - 17:00 (Last Admission 16:30)

ACCESSIBILITY





Holy Trinity Church, Soldierstown

52a Soldierstown Road, Aghalee,
Antrim BT67 0ES



Holy Trinity, Soldierstown (1667) - a historic church in the Caroline tradition; plus, a display of historic photographs reflecting the heritage of Aghalee Parish and the soldiers of Soldierstown.

OPENING TIMES

Sat: 09:00 - 17:00

Sun: 13:00 - 17:00

ACCESSIBILITY





Hushhh! The Silence of Sewing

Venue to be confirmed. Contact for more information at:
ehod@communities-ni.gov.uk



Hushhhh ! The Silence of Sewing, demonstrations. Join experienced Curator Ciaran Elizabeth Doran and take gentle look at freestyle embroidery using preloved and locally sourced embroidered fabrics. Learn about the significance of embroidery and how it has developed into a popular creative contemporary pastime , with a huge emphasis on health & Wellbeing. Samples available and add your own stitches to a large collaborative textile on a 24 inch embroidery hoop that will reflect this year's Festival.

BOOKING REQUIRED

This sewing event will take place every hour from
 10:00 - 16:00 on both days.

OPENING TIMES

Sat: 10:00 - 16:00

Sun: 10:00 - 16:00

ACCESSIBILITY



County Armagh

26 Openers & Events



Family Activities



Living History



State Care Monument



Walk/Talk/Tour



Performance/Music



Festival



Listed Building



Self Guided



Garden



Events/Exhibition



Only open for EHOD



Tick off your visits

Visit www.discovernorthernireland.com/ehod for more information on what's on in County Armagh.

County Armagh Accessibility Icons



Designated Parking/Drop-off Point



Rest Seating Available



Lift/Stairlift



Ramped Access



Accessible Toilet



Level Access



Baby Changing Facilities



Firm Terrain/Paths



Induction Loop



None



Literature in alternative formats,
e.g. large print/braille



Poyntzpass Guided Village History Walk

The Square, Poyntzpass,
Armagh BT35 6SN



Guided village walk of Poyntzpass by members of Poyntzpass & District Local History Society. (Weather permitting)
Everyone welcome.

OPENING TIMES

Sat: 12:00 - 14:00

Sun: 14:00 - 16:00

ACCESSIBILITY





Poyntzpass Local History Exhibition

The Meeting Place, Community Centre, Church Street,
Poyntzpass, Armagh BT35 6SW



An exhibition of local artefacts, models, photographs, scrapbooks and memorabilia from Poyntzpass and the surrounding area. Poyntzpass and District Local History Society have been collecting such items for over 50 years and members of the Society will be on hand to advise and answer any queries. Open to everyone.

OPENING TIMES

Sat: 14:00 - 17:00

Sun: 14:00 - 17:00

ACCESSIBILITY





IWAI Newry and Portadown Branch

Moody's Lock, Poyntzpass,
Armagh BT35 6UE



IWAI Newry and Portadown branch will give a talk on the historic canal trade links and how the Newry Canal connected the local area at the height of its popularity. Also a water based demonstration on active use of the canal at Moody's Lock, Canal Bank, Poyntzpass.

OPENING TIMES

Sat: 14:00 - 16:00

ACCESSIBILITY





The Old Courthouse, Markethill

7 Main Street, Markethill,
Armagh BT60 1PH



GUILTY AS CHARGED! Come learn the history of, and hear stories from, The Old Courthouse, Markethill.

ADDITIONAL INFORMATION

Saturday 10:00 and 14:00. We will be providing two half hour tours.

OPENING TIMES

Sat: 09:00 - 16:00

Sun: 12:00 - 14:30

ACCESSIBILITY





Milford Village Walking Tours

Hill Street, Milford, Armagh BT60 3PB



Discover the extraordinary architectural and social history of the world famous model village of Milford built by the McCrum family who revolutionized the linen industry. Booking essential.

ADDITIONAL INFORMATION

Saturday 10.30 and 13.00 Sunday 11.00 and 13.00.
Each tour lasts 1 hour.

BOOKING REQUIRED

<https://ehod.eventcube.io/events>

OPENING TIMES

Sat: 10:30 - 14:00

Sun: 11:00 - 14:00

ACCESSIBILITY





Archbishop's Palace Tour, Armagh Celebrating European Heritage Open Day

The Palace Demesne, Friary Road,
Armagh BT60 4EL



Bringing you behind the doors of The Primate's Palace, Armagh a beautiful neo classical building built and served as residence to Archbishop Robinson from 1770. It was occupied by subsequent Church of Ireland Archbishops until the 1970s. Your tour guide will share their knowledge of the building including the story of former Archbishop of Armagh, Richard Robinson 1765 to 1794, a colourful personality. Tour lasts approximately an hour. Also enjoy a feast for the eyes with the exhibition of the "Artist in Residence" J B Vallely, who has had a career in art and music spanning six decades.

ADDITIONAL INFORMATION

The tour takes place at 14:00 and is suitable for adults and children aged 6+. Should you have any queries please email walkingtours@armaghbanbridgecraigavon.gov.uk

Booking Required

Please see visitarmagh.com/ehod to prebook your space.

OPENING TIMES

Sat: 09:00 - 16:00

Sun: 12:00 - 14:30

ACCESSIBILITY



Armagh Friary

Friary Road, Armagh BT60 4EL



Armagh Franciscan Friary was founded by Archbishop Patrick O' Scannail in 1263/64. It had prominent patrons in the city and the Franciscans played an important part in the city's religious life until the Friary was suppressed in 1542 with the dissolution of the monasteries under Henry VIII. The buildings were involved in warfare later in the 16th Century and were ruined by 1600.

Two empty graves and two tomb recesses near the east end are reminders of the important patrons buried in the Friary Church. Located at the entrance to the Palace Demesne.

OPENING TIMES

Sat: Open Site.

Sun: Open Site.

ACCESSIBILITY





Navan Centre & Fort

81 Killylea Road,
Armagh BT60 4LD



The legendary Navan Fort (Emain Macha) is the earliest capital of Ulster and ancient seat of kings. Explore the archaeology and history associated with the great temple of 95BC, as well as learning of some of the amazing discoveries at the nearby sites of Loughnashade, Haughey's Fort and the King's Stables. Visit our ancient clan of Celts going about their daily lives where you may find them celebrating past battles, cooking, weaving or even preparing their weaponry! Hear stories of life over 2000 years ago! Visit the newly updated exhibition space, reflecting the recent archaeological digs at Navan Fort.

ADDITIONAL INFORMATION

10:30 tour only.

BOOKING REQUIRED

30 per session, only 10:30am tour on Saturday and 10:30 tour on Sunday. Booking via NavanCentre.com

OPENING TIMES

Sat: 10:30 tour only.

Sat: 10:30 tour only.

ACCESSIBILITY



Armagh Robinson Library

43 Abbey Street, Armagh BT61 7DY



Built of ashlar limestone to the classical design of Thomas Cooley, we will have his architectural drawings of the Library on display. The Library's founder, Archbishop Robinson, included the Library in his plans for a university and gave many of its collections. The Library was made larger some 70 years later to the design of the architect Robert Law Monsarrat. A Greek inscription above the entrance is translated to 'the healing place of the soul'. We still aspire to that and invite you to experience it on EHOD.

OPENING TIMES

Sat: 11:00 - 17:00

Sun: 14:00 - 17:00

ACCESSIBILITY





St Patrick's Church of Ireland Cathedral

Cathedral Close, Armagh BT61 7DY



A spacious early 19th Century interior, the latest of many renovations of Archbishop O'Scanlan's Cathedral of 1268, on the site of St Patrick's 'Great Stone Church' of 445. The burial place of Brian Boru (1014). Important monuments and stained glass windows. Each child will receive a free booklet on the Cathedral. Visits to the crypt will be available on request.

OPENING TIMES

Sat: 10:00 - 17:00

ACCESSIBILITY





No 5 Vicars' Hill

No 5 Vicars' Hill,
Armagh BT61 7ED



Built in 1772, restored and re-opened in 2011, this deceptively large building has a fascinating interior. Originally used to house the Armagh Diocesan records, examples of these records are on display, with ancient coins, gems, significant prints, early Christian artefacts and other collections and curiosities from Armagh Robinson Library.

OPENING TIMES

Sat: 11:00 - 17:00

Sun: 14:00 - 17:00

ACCESSIBILITY





St Aidans Parish Church

**Salters Grange Road, 21 Salters Grange Road,
Armagh BT61 8EX**



St Aidan's Parish Church, Salters Grange is the work of Architect Thomas Cooley and is built on a site given by Sir Capel Molyneux of Castledillon and funded by Archbishop Richard Robinson First Baron Rokeby for whom he produced a pattern book of ten church designs. The original book is held in the Robinson Library. A common feature of all Cooley-Robinson churches is that they are built on hills. Architect Thomas Cooley and Archbishop Richard Robinson are names synonymous with the city and district of Armagh.

ADDITIONAL INFORMATION

Talk timed for 12:30 and 15:00.

OPENING TIMES

Sat: 10:30 - 17:00

Sun: 12:00 - 17:00

ACCESSIBILITY



Museum of Orange Heritage at Sloan's House

86 Main Street, Loughgall, Armagh BT61 8HZ



A small house that played a large part in history here; the Orange Institution was formed around the aftermath of the Battle of the Diamond. Loughgall, and in particular Sloan's House, are key areas in the history of the Orange Order as it was here that the Institution was formed around the aftermath of the Battle of the Diamond in 1795. This site also includes a permanent exhibition space, a Garden of Remembrance, café and research facilities. A Garden of Remembrance is located at the rear of the Museum.

OPENING TIMES
Sat: 10:00 - 16:00

ACCESSIBILITY





Dan Winter's House

9 Derryloughan Road, The Diamond,
Loughgall, Armagh BT61 8PH



The original ancestral home of the Winter family, made famous and accepted as to where the decision to form the Orange Order was made, following the Battle of the Diamond 21st September 1795.

ADDITIONAL INFORMATION

Tours provided on request.

OPENING TIMES

Sat: 10:30 - 17:30

Sat: 14:00 - 17:30

ACCESSIBILITY





Dan Winter's Cottage

1, Derryloughan Road, Loughgall,
Armagh BT61 8PH



Dan Winter's Cottage is the birthplace of the Orange Order and the Ancestral Home of Dan Winter. The cottage situated close to Loughgall village at the Diamond Crossroads on the corner of Derryloughan road, is the focal point of the Battle of the Diamond which took place here in 1795. The battle resulted from tensions between Catholic and Protestant factions in the area at that time and resulted in the formation of the Orange Order.

ADDITIONAL INFORMATION

Tours available on request.

OPENING TIMES

Sat: 11:00 - 17:30

Sat: 12:00 - 17:30

ACCESSIBILITY





First Presbyterian Church, Armagh

Mall West, Armagh BT61 9AP



Come and enjoy a warm welcome to this fine, unique, High Gothic Church on The Mall, built in 1879. Learn of the Congregations' Ulster-Scots origins, and history. They celebrated their 350th Anniversary, during 2023.

ADDITIONAL INFORMATION

Tours available as required.

OPENING TIMES

Sat: 10:30 - 16:30

Sun: 13:30 - 16:30

ACCESSIBILITY





Armagh City Centre Walking Tour celebrating European Heritage Open Day

Meet outside Armagh County Museum, The Mall East, Armagh BT61 9BE



Armagh city is located in the heart of Ulster and appointed the ecclesiastical capital of the island of Ireland. To discover more about the story of this city and its citizens from the pre-Christian era up to modern times, take part in a guided walking tour celebrating its roots in myths, legends, history and heritage. Moving at a leisurely pace, stopping off at various locations on a route of approx 1 km, please dress appropriately for the weather, with walking shoes, moderate level of fitness. Headsets provided ensuring everyone can hear and follow the tour.

ADDITIONAL INFORMATION

The tour takes place at 14:00 and is suitable for adults and children aged 6+. Should you have any queries please email walkingtours@armaghbanbridgecraigavon.gov.uk

BOOKING REQUIRED

Please book tickets using the link visitarmagh.com/ehod

OPENING TIMES

Sun: 14:00 - 15:30

ACCESSIBILITY



Armagh Observatory and Planetarium

College Hill, Armagh BT61 9DB



The Armagh Observatory and Planetarium will be opening its largest telescope dome to the public. We have been conducting astronomical research for over 200 years, and we want to show off some of our amazing telescopes. Discover the difference between historic and modern telescopes during this unique event, only available for European Heritage Open Day 2024.

ADDITIONAL INFORMATION

Tours every 30 minutes between 14:00 and 16:00.

BOOKING REQUIRED

Booking via the website:

<https://armaghobservatoryplanetarium.ticketsolve.com/ticketbooth/shows>

OPENING TIMES

Sat: 14:00 - 16:00

ACCESSIBILITY



Sheils Houses Armagh

Tower hill, Armagh BT61 9DW



Come and look at this beautiful listed building, enjoy a guided walk around the property and gardens. This charming range of houses overlooks the historical city of Armagh and was built in Gothic Revival style to designs by architects Lanyon and Lynn. Charles Sheils' was born in 1782 and was profoundly affected by the hardships and poverty endured as a result of the potato famine in Ireland. He stated in his will of 1869 that the houses were for those in need. To this day the Trustees are required to adhere to these principals in the accommodation of houses.

OPENING TIMES

Sat: 10:00 - 16:00

Sun: 10:00 - 17:00

ACCESSIBILITY



St. Matthew's Church of Ireland Church Richhill

Main Street, Richhill Armagh BT61 9PW



Visitors to St. Matthew's Church will be able to step back in time inside a building that dates back to 1837 when it was converted from a market house. The church, which is situated beside Richhill Castle, has an impressive bell tower and several beautiful stained glass windows.

OPENING TIMES

Sat: 10:00 - 16:00

ACCESSIBILITY



Ballymore Parish Church

2A Armagh Road, Tandragee Armagh BT62 2AY



Place of Worship. 200 years old with links to Tandragee Castle.

OPENING TIMES

Sat: 10:00 - 16:00

Sun: 13:00 - 16:00

ACCESSIBILITY





Northern Ireland's Secret Bunker

Derrylettiff Road, Portadown Armagh BT62 1QU



15ft below a field on the outskirts of Portadown lies a relic of the Cold War. The former monitoring bunker was part of a network of similar structures all over the UK built to study the effects of Nuclear explosions and the resulting radioactive fallout. Find out how our country would have coped if the Cold War had ever turned hot. Guided tours will be given by original crew members were available dressed in period uniform.

ADDITIONAL INFORMATION

Tours run every 30mins.

BOOKING REQUIRED

6 x People per tour. Tours last 30mins.

Booking@nibunker.co.uk

OPENING TIMES

Sat: 11:00 - 17:00

ACCESSIBILITY





Ardress House

64 Ardress Road, Annaghmore, Portadown
Armagh BT62 1SQ



This charming 17th-century farmhouse, elegantly remodelled in Georgian times, offers fun and relaxation for all the family. Set in 40 hectares (100 acres) of countryside there are apple orchards, charming woodland and riverside walks. The atmosphere of a working farmyard has been rekindled with the return of small animals.

ADDITIONAL INFORMATION

Tours Hourly

OPENING TIMES

Sat: 11:00 - 17:00

ACCESSIBILITY



Brownlow House

Windsor Avenue, Lurgan, Craigavon
Armagh BT67 9BJ



Brownlow House is a grade A listed building. Built by the 1st Lord Lurgan Charles Brownlow in 1833 in an age of grandeur with its multiple ornate chimney stacks which dominate the skyline. Home to the wealthy Brownlow family as well as the legendary Greyhound Master McGrath, owned by the 2nd Lord Lurgan. The house stands as a testimony to the craft of its day and every room is full of history. The house has two on site museums and beautiful Tea Rooms. A place of history and a place to visit.

ADDITIONAL INFORMATION

Tours hourly.

OPENING TIMES

Sat: 10:00 - 16:00

Sun: 10:00 - 15:00

ACCESSIBILITY



Hands on Heritage: Recording Heritage on the Blackwater

Blackwater River Trail, Maydown Car Park,
Benburb Armagh BT71 7JZ



Join UAH staff at the beautiful Blackwater Valley River Trail to learn more about its history and record aspects of its diverse industrial and built heritage via the Hands on Heritage in your area recording app.

ADDITIONAL INFORMATION

Two Tours at 10:30 and 14:00.

BOOKING REQUIRED

For Booking Email - info@uahs.org.uk or Call **028 9055 0213**

OPENING TIMES

Sat: 10:00 - 14:00

ACCESSIBILITY





The Argory

Derrycaw Road, Derrycaw Road, Moy,
Armagh BT71 6NA



Built in the 1820s for the MacGeough Bond family, it was designed by Arthur and John Williamson of Dublin around 1819. The house came into existence due to a quirky stipulation in a will. Created with Caledon stone with Navan limestone foundations and windowsills, the interior remains unchanged since 1900. Stepping inside this Neo-classical masterpiece reveals the eclectic tastes

and interests of the family. The grounds offer sweeping vistas and scenic walks. Explore the adventure playground before relaxing in The Courtyard Cafe with a tasty treat.

OPENING TIMES

Sat: 11:00 - 17:00

ACCESSIBILITY

